

PHONICS BASED READING  
SPIRITUAL FOUNDATION  
DEGREED & CARING TEACHERS  
ACCREDITED THROUGH ACSI



2216 NW MILITARY HWY. | SAN ANTONIO, TX 78213

CASTLEHILLS.SCHOOL



THE CHRISTIAN SCHOOL AT  
CASTLE HILLS

KINDERGARTEN

NOW ENROLLING!



*Schedule A Tour Today!*

[admissions@castlehills.school](mailto:admissions@castlehills.school) | 210.878.1001

# Kindergarten FAQ's

## WHAT DOES EARLY READING SUCCESS MEAN TO YOUR CHILD?

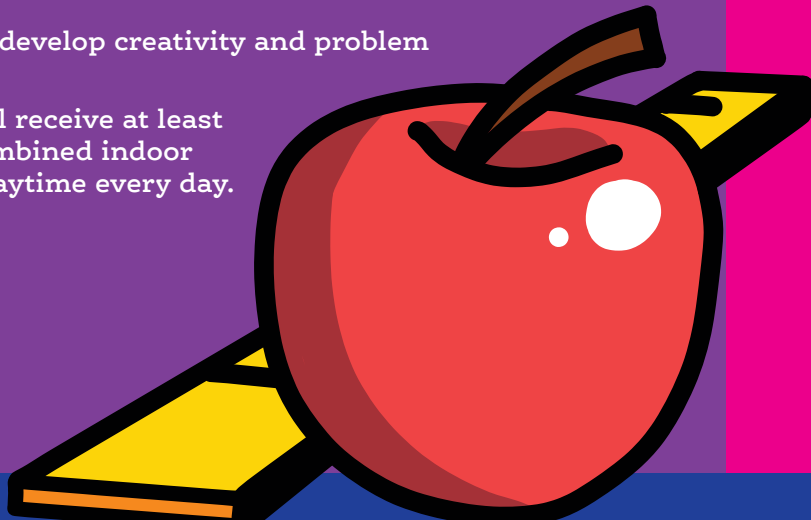
- K5 graduates are reading short vowel words with fluency, are reading long vowel words that have the two-vowel phonics rule, and have knowledge of 60–100 sight words.
- Teachers expose students to compound words.
- Strategies are used to introduce students to the two main components of reading: decoding and comprehension.
- Many of our Kindergartners are reading short books by spring.

## WHAT ABOUT MATH?

- Instruction is delivered in a small student/teacher ratio which provides more individualization than public schools on a daily basis.

## IS PLAYTIME IMPORTANT?

- Research studies support the belief that unstructured playtime for children has a positive impact on increased test scores.
- Playtime helps develop creativity and problem solving skills.
- K5 students will receive at least one hour of combined indoor and outdoor playtime every day.



## WHAT TYPE OF HANDS-ON PROJECTS ARE INCORPORATED INTO THE CURRICULUM?

- STEM activities are incorporated into our curriculum quarterly.
- In-class curriculum puts an emphasis on hands-on activities which include a special 100th-day celebration of many activities. Outside projects involve parental support and participation to include creating a 100th-day of school poster, a Black History project, and a simple classical children's literature book report. Weekly homework is assigned in Bible memory along with additional practice of concepts the children are learning in the classroom.
- K5 students experience the power of serving by collecting treats, delivering them, and praying over the Castle Hills Fire and Police Departments.
- Field trips are designed to be educational and hands-on. There are at least two field trips each year along with special family days such as Thanksgiving Feast and the Character Parade. Field trip costs are included in tuition for Kindergartners.

## WHY IS THE INTEGRATION OF A BIBLICAL WORLDVIEW IMPORTANT IN MY CHILD'S EDUCATION?

- The foundation of shaping a biblical worldview begins in Kindergarten through our Building on the Rock Bible curriculum. Students memorize Bible verses and enjoy Bible Stories that reinforce the worldview teaching. Worldview lessons are incorporated into every facet of the school day where the children can see God at work.
- The discipline system used is based on the Honorable Character program where students are introduced to 14 character qualities that are used in the redirection and correction of students. Children are counseled to have a repentant heart when sin is present and are encouraged to walk in harmony with God and each other.
- All teachers instruct through the filter of God's Word, and students are encouraged to know God and to enjoy Him forever.
- Our students are taught the 5 Leadership Attitools:
  1. Right King
  2. Respect
  3. Real Hard Work
  4. Responsibility
  5. Ready to Show Love